

翻斗鞋柜B106A安装图

满意请打5分哦!

宝贝与描述相符 ★★★★★ 5
卖家的服务态度 ★★★★★ 5
卖家的发货速度 ★★★★★ 5



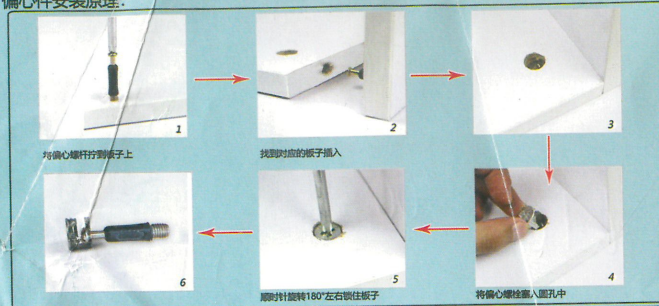
如纸质版安装图看不清, 请您微信扫描二维码获取电子版图文说明。

如果有运输破损, 请告知客服具体什么配件, 让其帮您免费补发!

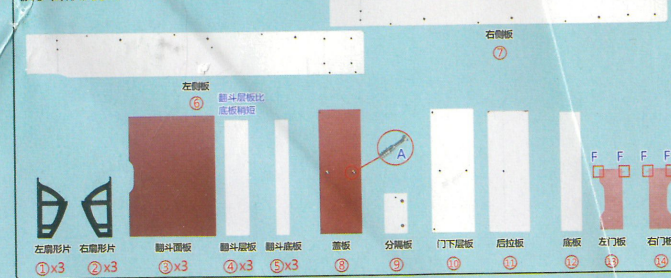
A*2	B*2	C*19	D*37	E*6	F*5	G*30	H*6	I*1

温馨提示: 安装时螺丝拧七分紧, 等全部完成后再拧紧!

偏心件安装原理:

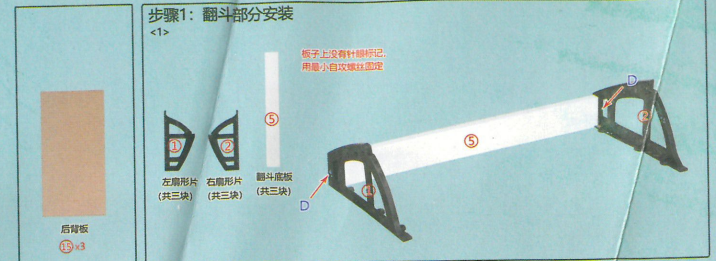


板子名称及序号:

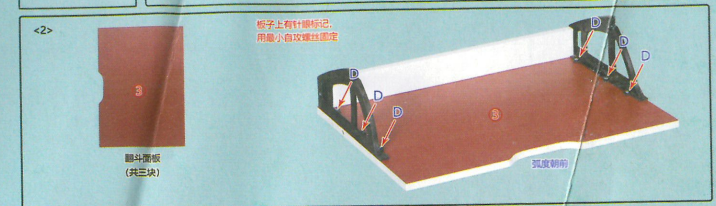


步骤1: 翻斗部分安装

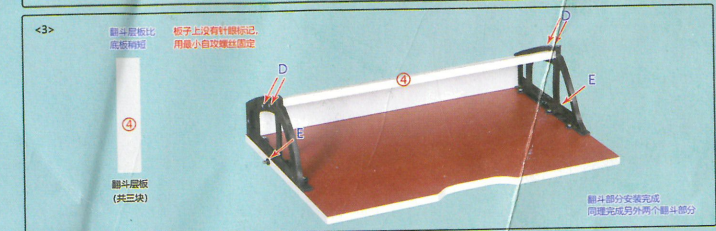
<1>



<2>

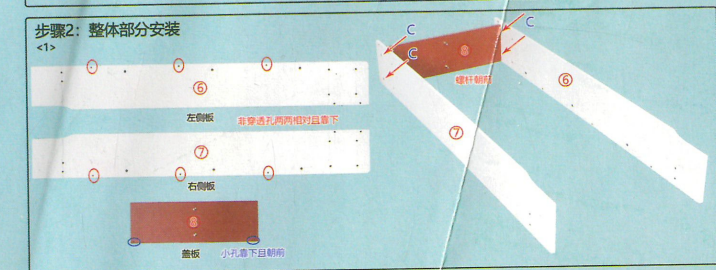


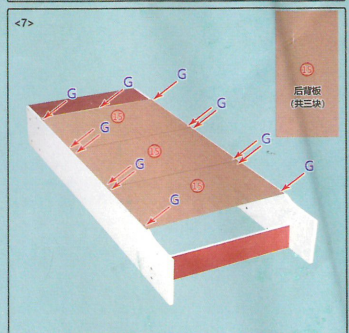
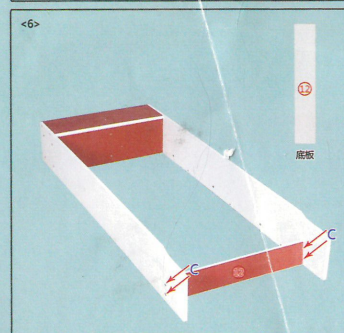
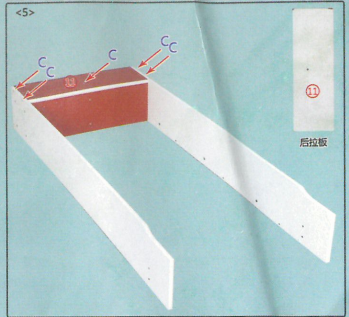
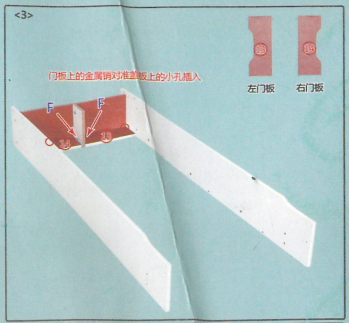
<3>



步骤2: 整体部分安装

<1>





LFOZ-100